



Bathing establishment Fact Sheet

Name of bathing establishment	DORA
Address	Via Barellai, 76
City	Viareggio (LU)
Contacts	Tel +39 0584 51325
Website	https://www.facebook.com/bagnodora/

TESTED BY: [Handy Superabile - Social Promotion Association](#) in summer 2023

Please note The following information refers to the verification date shown at the bottom of each sheet. The Association is not responsible for any significant changes made to the property after the visit.

Summary

Bathing establishment Fact Sheet	1
Arrival at the facility	2
Private/public parking	2
Pathway from the parking lot to the main entrance	2
Reception welcome	3
Bar/restaurant	4
Internal pathways and common services	5
Internal pathways	5
Toilet and shower accessible to guests with reduced mobility	6
Changing room	7
Beach	8
Children's play area	9
Pool	10
Medical practices/health facilities	10

Project carried out with the contribution of





Arrival at the facility

Private/public parking

Presence of private parking	NO
Presence of parking space reserved for people with disabilities	NO
Type of parking lot	ASPHALT
Public parking nearby	YES about 50/100 meters away
	

Pathway from the parking lot to the main entrance

Pathway from the parking lot to the entrance	flat
There are indicators and tactile maps	NO
Useful width of door/entrance passage	greater than 90 cm





	<p>Factory entrance</p>
--	-------------------------

Reception welcome

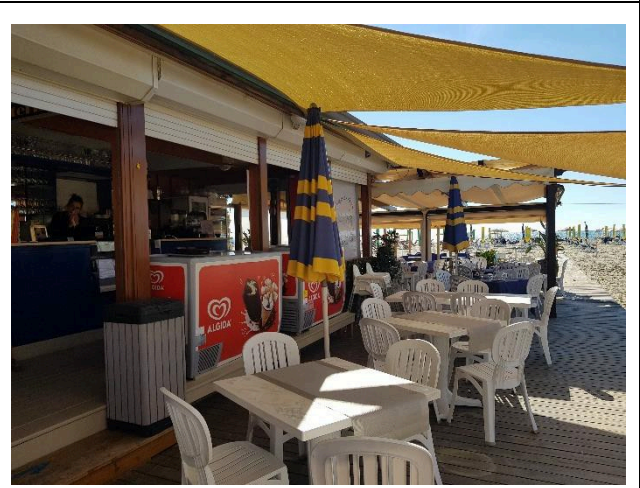
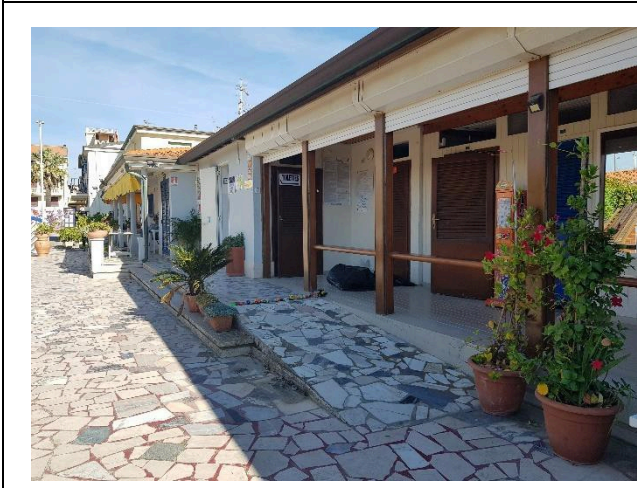
<p>Umbrella booking system</p>	<p><input type="checkbox"/> Via the web <input checked="" type="checkbox"/> Via telephone <input checked="" type="checkbox"/> On site</p>
<p>Presence of multilingual staff</p>	<p>not detected</p>
<p>Presence of plant plan with legend of services available</p>	<p>NO</p>
<p>Presence of visuo-tactile map</p>	<p>NO</p>
<p>Noticeboard/information panels at an average height of 130 cm in a well-lit area and a character size of at least 14 dpi with a contrast ratio greater than 4.5:1</p>	<p>NO</p>
<p>The staff has undergone training on welcoming people with various disabilities</p>	<p>NO</p>

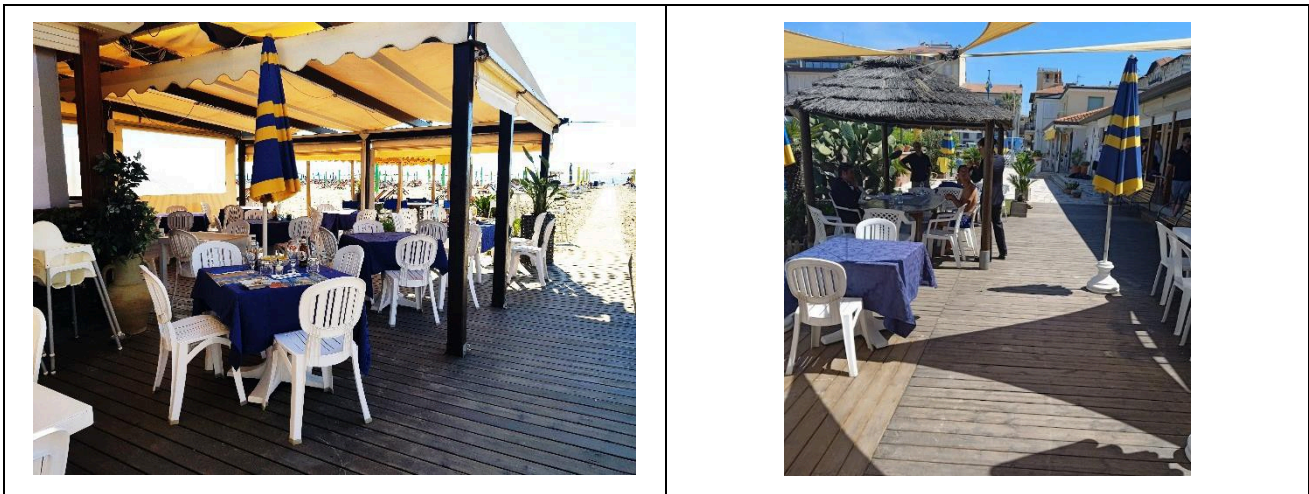




Bar/restaurant

Type of venue	Snack bar
Access to the venue	Bar reachable via ramp length 300 cm, width > 90 cm, slope 10% while the restaurant veranda can be reached on level ground
Useful width of door/entrance passage	greater than 90 cm
Bar counter	height greater than 100 cm
Type of tables	4 legged and centrally supported
Space under the floor tables	67 cm
Multilingual menu	not detected
Menu with large print characters	NO
Braille menu	NO
Table service for people with disabilities	YES
Availability of food for celiacs	<input type="checkbox"/> bread <input type="checkbox"/> pasta <input type="checkbox"/> cookies <input checked="" type="checkbox"/> ice creams <input type="checkbox"/> pre-packaged foods





Internal pathways and common services

Internal pathways


Indicate whether the pathways connecting the entrance to the beach are flat or with ramps in addition to those already described

obstacle-free pathways







Toilet and shower accessible to guests with reduced mobility

Number of toilets accessible/usable by guests with reduced mobility	1
Access to the venue	via ramp length 300 cm, width > 900 cm, slope 10%
Useful width of entrance door	85cm
Toilet height	50cm
Open front toilet seat	NO
Support handles	on both sides of the toilet
Flexible shower next to the toilet	NO
Free space on the sides of the toilet	to the left 26cm To the right greater than 90 cm Front greater than 90 cm
Electric bell/telephone	YES
Washbasin with space underneath for a wheelchair	70cm
Height from the ground to the lower edge of the mirror	sufficient for use by a person in a wheelchair
Baby changing table	not detected
	
Shower accessible to guests with reduced mobility available	Yes, shared with the toilet room





Shower type	open type
Floor-level shower	YES
Shower chair	missing
Support handle	NO
Presence of shower head or latch	latch with lowest point height cm
Electric bell/telephone	YES
	

Changing room

Changing room accessible to guests with reduced mobility available	YES there are 2 changing rooms
Access to the venue	One on level ground and one via the same ramp that leads to the toilet room: length 300 cm, width > 90 cm, slope 10%
Useful width of door/entrance passage	85cm
Dimensions of the changing room	1: width 150 cm and depth 171 cm 2: width 153 cm and depth 133 cm
Presence of cot	NO
Coat stand height from the floor	180cm



Project promoted by

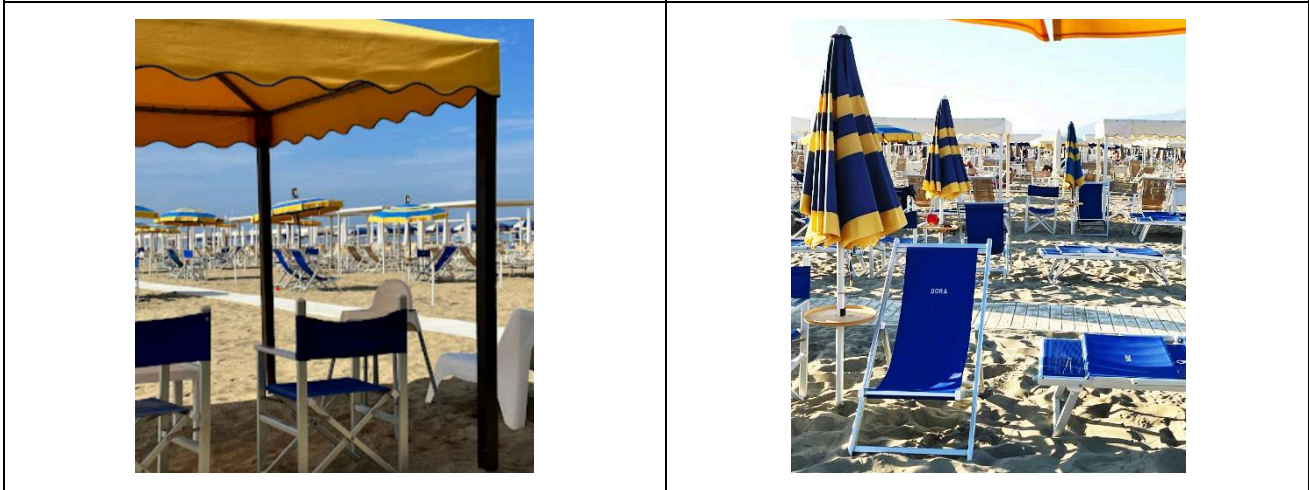


Regione Toscana



Beach

Type of beach	sand
Access to the beach	flat
Walkway to reach the umbrellas	YES
Type of walkway	made of PVC
Walkway width	90cm



Project carried out with the contribution of



**Presidenza del
Consiglio dei Ministri**
Ministro per la disabilità



Removable Platform between the walkway and the umbrella station to facilitate the passage and parking wheelchair

YES

Amphibious beach chair available for helping people with reduced mobility to enjoy swimming (owned by the establishment or by association)

YES



Children's play area

Children's play area	inaccessible to children with reduced mobility due to the sandy bottom
There are games for children with reduced mobility	NO





Pool

The property has a swimming pool	NO
----------------------------------	----

Medical practices/health facilities

Hospitals near the facility	Versilia Hospital SS 1, 335, 55049 Camaiole LU Telephone: 0584 6051
Other healthcare facilities	ASL Health District No. 12 Viareggio Place Buon Consiglio Viareggio Tel. 0584.6056353 Dialysis service in Pisa at CISANELLO HOSPITAL Dialysis therapy department (hemodialysis – peritoneal dialysis) in the period June - September Holiday Dialysis Service with availability of n. 6 beds tel. 050 997250 – 997253 – 997256

TESTED BY: Handy Superabile - Social Promotion Association - in summer 2023

Project carried out with the contribution of

